

## Background

**Raidió Teilifís Éireann** is Ireland's Public Service Media Organisation. RTÉ, through all of its services, forms a major part of the infrastructure of Irish society. The distinctive leader in Irish media, RTÉ provides a comprehensive and cost-effective broadcasting service to the Irish public on radio, television and the internet.

RTÉ has fully recognised its responsibility in the context of environmental performance and sustainability. This commitment is enshrined in its Environmental Policy which is signed at Director General level of the company. This policy embraces adjustments in our environmental approach in keeping with changing times including the need to focus on the impacts of climate change.

With an awareness of an ever increasing population, who are living longer and the high demand on the worlds natural

resources; RTÉ is aligning its environmental performance with its sustainability as a company. This ethos is manifested in the specific areas of environmental performance/achievements.

RTÉ has recently been awarded the Business in the Community – Business Acting Responsibly Mark. This testifies the commitment and performance of the company to responsible business behaviour.

This CSR certification is independently audited by the National Standards Authority of Ireland (NSAI) and it is based on ISO 26000. This is an all-encompassing standard that certifies responsible and sustainable business practices and is available to organisations worldwide. Only approximately 25 companies in Ireland have secured this to date.



## Environmental Management

The Green Broadcaster Group in RTÉ, comprises representatives from all parts of the organisation who can influence environmental performance. Attendees also include external representation including the EPA. We believe it is important at the point of target setting that we avail of specialist expertise to broaden the focus of the challenges we must address. We also believe that inclusion of a diverse group of staff in the process of setting targets to be of paramount importance to success.

This group meet regularly and set targets in all areas of environmental performance. The report of this process is circulated in a report to the Director General and the Executive Board of the company.

Awareness and communication – are factored into our environmental management as an essential component to our overall performance. We have an environmental website and include high profiles stories on our internal electronic notice board. We encourage feedback and engage in Green campaigns including staff competitions.

Our most recent Go Green campaign involved integration with staff and included an on line competition sponsored by our waste contractor. The campaign provided information and tips on environmental best practice. As part of the campaign we scheduled a presentation by Raoul Empey, Climate Reality Leader on climate change which took place in our studios and was broadcast to our regional premises. The event was opened up to staff, suppliers and other businesses in the community.

## Waste Prevention and Management (Achievements/Future Goals)

We operate a binless office system and have eliminated 312,000 plastic bin liners from the waste operation every year. Further elimination of the use of plastic in the waste management operation has taken place recently with the introduction of a reusable postal type bag for recyclables. Eliminating the need for approximately 90,000 plastic bags.

Our recycling programme has accrued savings to RTÉ (since 2003) of well over €700,000, with over 4000 tonnes of waste diverted from landfill. RTÉ's bin-less office programme has seen RTÉ achieve recycling rates up to and over 80%. Most recently items which are not recycled are in fact recovered thereby giving us a zero to landfill status.



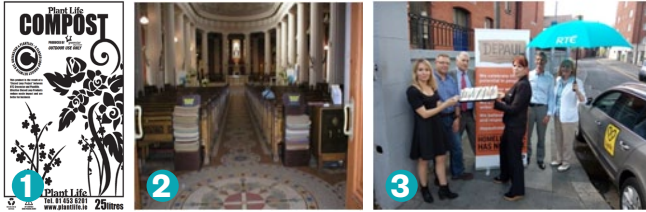
There is a purpose designed waste compound supporting segregation at source. The compound houses facilities for as many waste streams as possible in order to optimise waste prevention.

| 2017 (Tonnes) | Feb    | Mar    | Apr    | May    | Jun    | Jul    |
|---------------|--------|--------|--------|--------|--------|--------|
| Recycled      | 21.984 | 46.264 | 27.793 | 26.188 | 40.383 | 38.905 |
| Recovered     | 5.251  | 13.994 | 9.02   | 9.378  | 9.184  | 13.124 |
| Recycling     | 81%    | 77%    | 75%    | 74%    | 81%    | 75%    |

However in recent years and in congruence with changes in our environmental policy and legislation – our focus has strongly moved to waste prevention.

A different approach has been adopted which focuses on products before they become waste. This involves partnerships with our contractors and other stakeholders to explore and identify what can be done which will prevent or slow down the generation of waste.

RTÉ has developed a number of “Closed-Loop Projects” over the years involving other suppliers, leading to a common environmental/community benefit. Eg:



1. Food waste taken by waste contractor and turned into high-grade compost – then bagged and returned to RTÉ grounds and a Commercial operator. Single project.
  2. Re-use of carpet samples and cabinets made from recycled wood to hold them. For use in Dublin Cathedral - providing a comfortable mat to sit on for the elderly and infirm. Single project.
  3. Closed-Loop Project between Baxter Storey Caterer and Lynk Taxis to provides Sandwiches to the Night Shelter – this was developed through targets set in our Environmental Plan to reduce food waste. On going.
- RTÉ is a member of SMILE and has contributed to other businesses through this resource. This is clear prevention of waste in that items are redirected to others which might otherwise become a waste. On going.
  - In November 2015 RTÉ joined Green Business Green 50 whereby monies accrued through our toner cartridge recycling programme are directed to charity and in this case Crumlin’s Children’s Hospital. This is ongoing. RTÉ further

supported the launch of this with a photo shoot involving Miriam O’Callaghan.

- RTÉ supports a major battery recycling initiative with WEE Ireland whereby RTÉ and staff collect batteries for recycling – donations from this then go to Laura Lynn Children’s Hospice. On going.
- The content of bins in the toilet areas is primarily blue paper towel and this waste is kept separate and our waste contractor then directs this for composting. This measure addresses approximately six tonnes of waste a year.
- RTÉ has in the past twelve months eliminated plastic bags from its waste disposal process. This has been done at bin stations by replacing the general waste bag with a compostable bag and the use of a postal type reusable bag for its recyclables. This measure has prevented the need for approximately 90,000 plastic bags per year. In the event that any area causes contamination a system is in place whereby the polluter’s costpool is charged for the impact.
- Resulting from commitments in our environmental policy and plan - we have set up a working group, comprising of RTÉ staff and external advisers to investigate and pioneer new standards and processes of achieving sustainable practice in the area of external filming.



## Energy (Achievements/Future Goals)

RTÉ is committed to the highest level of energy reduction and sustainability both in the management of existing infrastructure and the development of new infrastructure. New focus has been placed on energy conservation within RTÉ by the National Energy Efficiency Action Plan 2009-2020, which stated:

*“The public sector will reduce its energy efficiency by 33% and be seen to lead by example showing all sectors what is possible through strong committed action”.*

- RTÉ are managing in the direction of ISO50000 with one person on site now qualified to audit. Auditing is scheduled for 2017.
- RTÉ are leading by example with several technically innovative, industry-acclaimed projects, closely aligned to the core principles by which an effective sustainable energy policy should be based.

These include:

- Photovoltaic solar power generation on site
- [https://enlighten.enphaseenergy.com/pv/public\\_systems/8B7J664618/overview](https://enlighten.enphaseenergy.com/pv/public_systems/8B7J664618/overview)

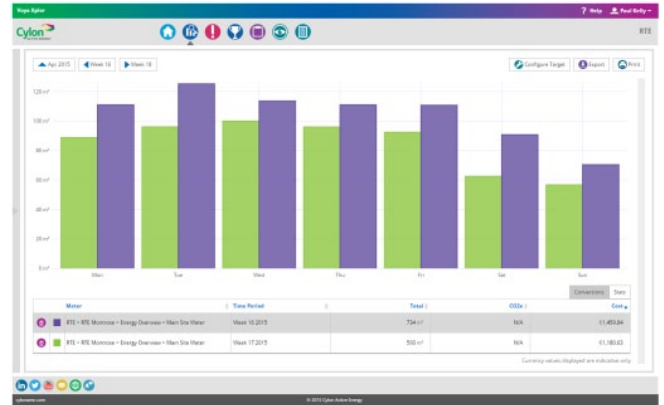


- **Retrofit** Energy Strategy for the TV Building’s Chilled water system. This made changes to how the cooling system for the Television Building was controlled. In simple terms it moved to a sophisticated demand driven system. (Finalist in the SEAI Energy Awards 2012).
- **Ice Bank Cooling System** at the Radio Centre (Featured in Institute of Engineers of Ireland’s quarterly magazine). This allows RTÉ to run its cooling system at night, and discharge it during the day. This leads to efficiencies due to night rate electricity and cooler operating temperatures.
- Ongoing **replacement of cooling systems** with modern efficient equivalents utilizing free cooling where possible.
- The Central Apparatus Room in the TV centre for example is now cooled most of the year round by **fresh air**.
- Increased **monitoring** of energy usage points through electrical and gas metering.
- Ongoing **replacement of lighting** with more efficient type utilizing motion sensors and lighting controls where possible.
- Inter **departmental liaison** to ensure energy efficient alternatives are sought for equipment replacements. Furthermore that running costs are kept low by matching system performance with requirements (correct temperatures for I.T. equipment, matching studio hours with air conditioning equipment schedules etc.).

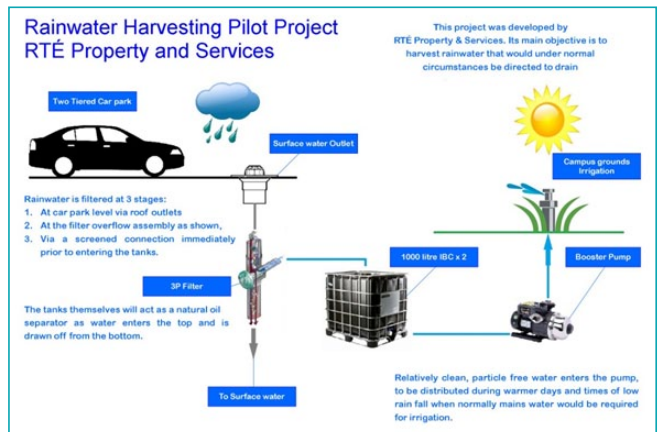
In the current round of SEAI (Sustainable Energy Authority of Ireland) audits, RTÉ are ahead of target for meeting its public sector commitments.

## Water (Achievements/Future Goals)

- A programme to monitor all on site usage of water per building has taken place and we are using this to target reductions.
- RTÉ have installed pressure reduction measures on their water supply system. This involves the use of pressure reduction valves (PRV). This was the subject of a thesis for one of Property and Services staff members and resulted in being a MEETA awards finalist. This demonstrates the participation and interest of staff in the innovation of sustainable technology.
- We are currently evaluating and benchmarking RTÉ policy to establish future goals in this area.
- Water conservation measures were introduced to the New Television Programmes building as a pilot and have resulted in approximately 50% savings. These measures will be rolled out to other buildings as appropriate.
- One of RTE's largest users of water is the New Television Programmes Building Chilled Water system, and the works mentioned above in the energy reduction section actually contribute to a reduction in water consumption also.
- Rainwater Harvesting for irrigation on Donnybrook site
- As the considerable roof area on site generates significant potential for gathering rainwater. A feasibility study has taken place to look at the possible use of rainwater harvesting to provide water for flushing toilets, or other uses.
- Resulting from this a pilot project was initiated in 2016 using the multi-storey external car park as a catchment area. This is currently in operational use and providing irrigation water for RTÉ's Donnybrook site.
- Details are shown in the accompanying graphic. This source has provided approximately 10,000 litres of water in a twelve month period. Our target is to build on this successful project by implementing a similar solution to our Programme Building.



Main meter data before and after PRV Installation



Water is held in the tanks, pending use.

PRV Installation



## Transport (Achievements/Future Goals)

- RTÉ has a bike-to-work scheme and operates a tax saver scheme.
- RTÉ operates Go Car – a go car is available on the RTÉ site for travel which is unavoidable.
- Environmental performance is factored into tender processes – eg our Catering Contractor sources locally produced food and thereby reduces the carbon footprint of their service.
- As fleet is replaced – we are replacing it with energy efficient vehicles.
- Charging point for electric vehicles on the Donnybrook grounds.



### TOTAL REDUCTION IN TRANSPORT FUELS SINCE 2009 DUE TO ABOVE INITIATIVES

| Energy                                       | Unit | Baseline  | 2016      | 2015      | 2014      | 2013      | 2012      | 2011      | 2010      | 2009      |
|--|------|-----------|-----------|-----------|-----------|-----------|-----------|-----------|-----------|-----------|
| Petrol (excl. blended bioethanol)            | kWh  | 43,140    | 9,797     | 14,074    | 20,088    | 21,988    | 21,951    | 21,673    | 25,541    | 43,140    |
| Road Diesel (DERV) (excl. blended biodiesel) | kWh  | 3,408,310 | 2,276,605 | 2,517,328 | 2,404,038 | 2,655,761 | 2,648,044 | 2,981,462 | 3,466,809 | 3,408,310 |
| Biodiesel (incl. all blended biodiesel)      | kWh  | 59,451    | 85,196    | 94,204    | 89,263    | 86,030    | 68,584    | 92,572    | 92,751    | 59,451    |
| Bioethanol (incl. all blended bioethanol)    | kWh  | 529       | 347       | 384       | 463       | 516       | 481       | 443       | 480       | 529       |

## Biodiversity (Achievements/Future Goals)

- A review has taken place of our grounds by Leave no Trace Ireland and
- RTÉ has partnered Leave no Trace Ireland in a mutually supportive role.
- Subsequent to this we have reduced lawn mowing, bird houses are in place and we have identified native plant species for landscaping.
- Training session for staff held on site by Leave no Trace
- Promotion on site of a new smartphone app which has been developed that allows quick and easy recording of biodiversity in the field. Biodiversity Data Capture app, developed by Compass Informatics, allows recorders to capture details of any species they encounter in the field

and send the records directly to the National Biodiversity Data Centre's national database. Biodiversity Data Capture is free of charge and is available as iOS and android.

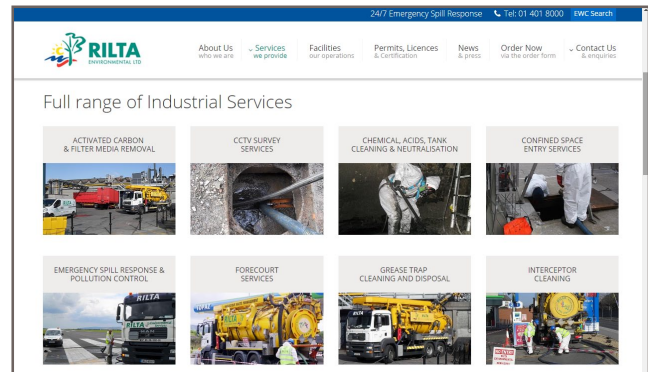
- Engagement with Trinity College in the facilitation of a project undertaken on the RTÉ grounds relating to the study of the effect of herbicides and fertilisers on the health of bees. This is currently underway on site.

### Future goals:

- Hosting a biodiversity workshop for Business in the Community. This is scheduled for the Autumn 2017.
- To hold workshops talks and blogs on pollinators and wildflower planting for staff.

## Pollution Control

- In general pollution control is managed through compliance and training. However a constructive focus is placed on this topic in an effort to recognise its importance in the context of environmental awareness and behaviour.
- Partnership with specialist contractor RILTA.



## Procurement

- As part of the development of a Cleaner Greener ethos, the procurement process is addressed within RTÉ's Environmental Policy and action plan.
- RTÉ has implemented green procurement as part of its action plan and the inclusion of sustainability criteria in tender documents.

## Climate Change

- In line with RTÉ's commitments – environmental performance and climate change risks are under consideration in the context of RTÉ's five year strategy.
- Measures have been taken to raise awareness on this important area including the hosting of a presentation by Climate Reality Leader Raoul Empey.

*RTÉ aspires to leading the way in the context of our environmental performance and to achieve recognition through the Pakman Professional Services Award would be a great honour and help to promote our efforts of sustainability throughout RTÉ and the wider community.*